

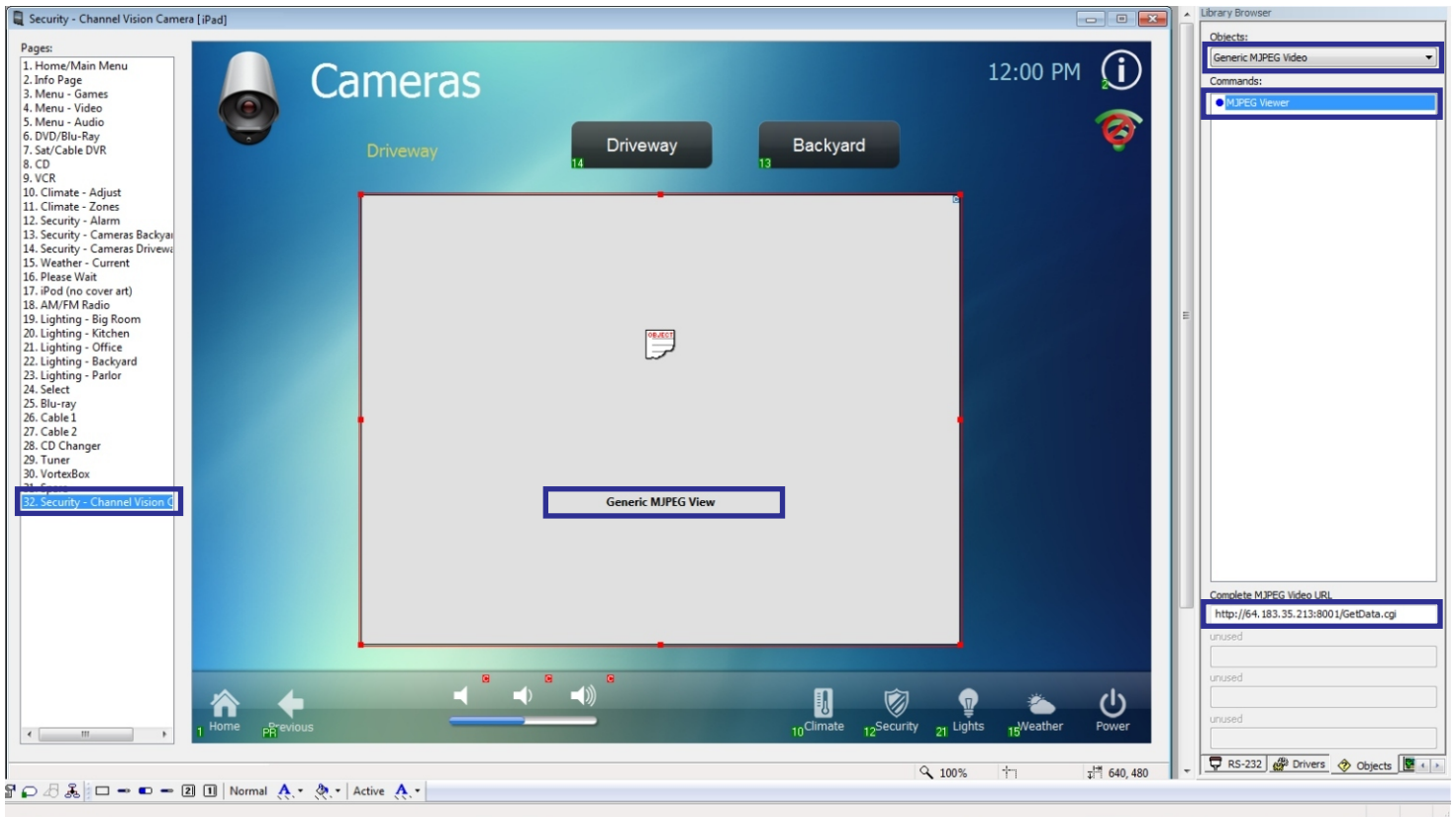
RTI Integration with Channel Vision IP Devices

Channel Vision IP cameras and Web Servers can be integrated with RTI. Below this integration is explained, and an example is provided.

Integration Instructions:

Create a page. Go to the "Objects" tab of the Library Browser and select the "Generic MJPEG Viewer." Type in the complete URL for the camera including '/GetData.cgi' and then drag the object where it says "Commands:" onto the page. Resize the object in the window to 640 x 480.

An example link is <http://192.168.1.205:8000/GetData.cgi>... user name = admin & password = admin
 For internal camera viewing on the LAN, this is all that is needed. To view the iPad from outside the home, you will need to setup the Gateway processor address. In "File/System Properties" menu, on the "RTI Panel/Virtual Panel" tab you must set the External IP/Hostname to be either the IP address or a dynamic dns address for the master XP processor. For an iPad, this the same place the iPad/iPhone License was entered.



RTI and the RTI logo is are registered trademarks of Real-Time Innovations, Inc. All other trademarks are the property of their respective owners.



CHANNEL VISION Costa Mesa CA 92626 1-800-840-0288 www.channelvision.com		
Title RTI Integration		
Size A	File Name RTI Integration	
Scale na	Sheet 1 of 2	Date 07/13

RTI Integration with Channel Vision IP Devices

CHANNEL VISION Costa Mesa CA 92626 1-800-840-0288 www.channelvision.com		
Title RTI Integration		
Size A	File Name RTI Integration	
Scale na	Sheet 2 of 2	Date 07/13